



LSCB

Bath & North East Somerset
Local Safeguarding Children Board

Annual Report 2015 – 2016

Executive Summary

June 2016

1. The Role of the Local Safeguarding Children's Board (LSCB)

B&NES LSCB is a statutory (though independent) Board established under the Children Act 2004 (Section 13) and the Local Safeguarding Children Board Regulations 2006. It is independently chaired and consists of senior representatives of all the principle stakeholders working together to safeguard children and young people across the area.

The Terms of Reference for the LSCB are available on the LSCB web page and are due for review in 2016-17:

http://www.bathnes.gov.uk/sites/default/files/sitedocuments/Children-and-Young-People/ChildProtection/lscb_terms_of_reference_updated_26.11.15.pdf

As the LSCB for B&NES, we are responsible for coordinating and monitoring the work of agencies, especially but not exclusively those providing services to children and families, to safeguard and promote the welfare of children. In doing so the Board:

- Promotes and supports activities that protect children and young people from significant harm and the continuing risk of harm;
- Works to raise awareness within the wider community, including statutory, voluntary and independent agencies, about how everybody can contribute to safeguarding children and promoting their welfare.

Safeguarding is everyone's business

2. The Work of the LSCB

The work of the LSCB includes but is not limited to:

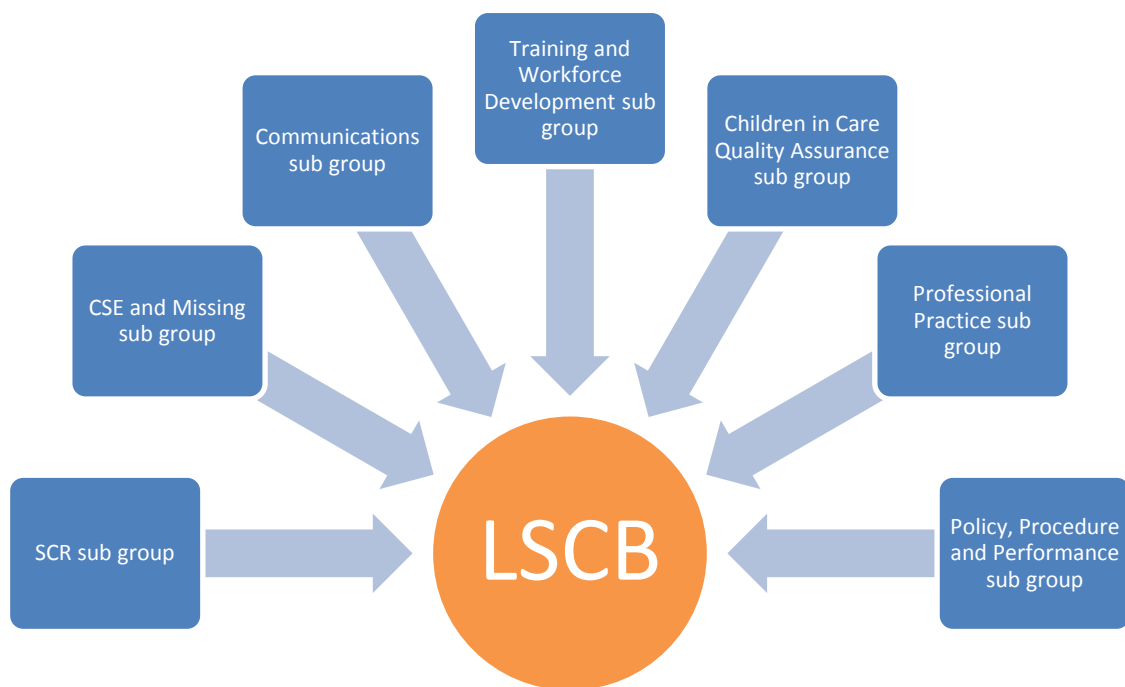
- Taking the lead to ensure that agencies work well together to safeguard children and young people.
- Ensuring that all organisations comply with their duty to safeguard and promote the welfare of children and young people.
- Coordinating and delivering multi-agency safeguarding children training.
- Promoting and publishing multi-agency child protection and safeguarding policies and procedures.
- Commissioning Serious Case Reviews and multi-agency audits so that we learn what we need to improve in terms of the work that we carry out with children, young people and families.
- Overseeing multi-agency learning events and conferences so that good practice is shared.
- Playing a key role in ensuring and monitoring that recommendations from inspections and reviews about safeguarding children are carried through.

•Working alongside other committees/boards such as the Children’s Trust Board, Local Safeguarding Adults Board and the Health & Wellbeing Board to ensure that work to safeguard children is co-ordinated.

3. The Sub-Groups of the LSCB

The LSCB has seven sub-groups as set out below. The Terms of Reference for each of the sub-groups are available on the LSCB web page:

<http://www.bathnes.gov.uk/services/children-young-people-and-families/child-protection/local-safeguarding-children-board>



- Each sub group reports progress on the Board’s Business Plan on a quarterly basis and contributes to the Chair’s Agenda Setting meeting. Each sub-group has a duty to challenge practice within the partnership where it identifies issues of concern.
- The full Annual Report 2015-16 lists the key achievements, challenges and priorities for each sub group in 2016-17. The report is available on the LSCB website <http://www.bathnes.gov.uk/services/children-young-people-and-families/child-protection/local-safeguarding-children-board>
- The LSCB adopted a three year Business Plan from September 2015 to March 2018. This is monitored by the Sub Group Chairs prior to the Board and reported on at each Board meeting.
- The year-end report is available on the public website: http://www.bathnes.gov.uk/sites/default/files/sitedocuments/Children-and-Young-People/ChildProtection/lscb_business_plan_2015-18_updated_march_16_final.pdf



Bath & North East Somerset
Local Safeguarding Children Board

Keeping children safe is everyone's responsibility

If you suspect a child is being abused or neglected, call 01225 396312 or 01225 396313 immediately

LSCB Stakeholder Day

Due to the continued high profile of Child Sexual Exploitation (CSE) within the media and within our own professional responsibilities and focus on 'getting it right', the LSCB felt that it was important for this to be the focus of LSCB Stakeholder Event which took place in January 2016.

It was attended by 84 delegates representing the following agencies / organisations: Health; Social Care; Education; Commissioning; Police and Voluntary Organisations. The feedback gained from the day was overwhelmingly good suggesting that it had been a challenging but positive event. Delegates shared that they found it very useful to have an update on the work that has been undertaken with regard to this topic and were invested in supporting further developments taking place over the next year. The responses gained about the individual speakers and performances that occurred throughout the day evidenced that the information was well received with delegates expressing that they found the presentations very informative, knowledgeable and thought provoking. Although it is of note that several evaluation forms stated that it would have been beneficial for additional time to be given to some speakers to enable a greater level of learning to have been shared.

The day consisted of speakers and presentations to focus on why and how young males can be at risk/prone to violence, CSE knowledge and overview of local processes, including: Willow Project, the Police role and Barnardo's BASE project; and a stark theatre dramatisation of how young women are groomed and exploited. Following the use of this short drama piece, NHS England commissioned a further six sessions of this production to use within its own training programmes in 2016-17.

4. Outcomes

- Like many other Local Authorities (LAs), in B&NES we have seen a rise in Child Protection activity with an increase from 109 children on a CP plan on 31st March 2015 to 151 at 31 March 2016. Work is ongoing to scrutinise decision-making and ensure that plans are effectively actioned and reviewed. It is encouraging that there has been a reduction in re-referrals within 12 months of the closure of a plan; and that less than 1% of plans have been in place for over two years.
- There has been some reduction in the number of Common Assessment Framework (CAFs) – but there is a pragmatic approach to use of alternative assessments and data on successful outcomes from CAFs is encouragingly positive, with a low rate of conversion to CP referrals.
- Overall rates of contacts and referrals to children's social care have remained steady.
- At the end of March 2015 there were 580 Children in Need and 149 Looked After.
- The LSCB has also:
 - a) Welcomed both a primary and secondary Head Teacher to the Board where they have made a valuable contribution.

- b) Further strengthened the links between the LSCB and the Local Safeguarding Adults Board (LSAB) through having the same independent chair for both Boards and the appointment of a joint Business Manager for both Boards.
 - c) Undertaken Section 11 themed audits of CSE and of training.
 - d) Developed the Board's risk register and progressed a new web-site which will be shared with the LSAB and is due to go live in 2016-17.
 - e) Adopted the local Early Help Strategy.
 - f) Worked to support the implementation of the multi-agency Willow Project working with young people at risk of CSE locally.
 - g) Held a development workshop for all partners on FGM and progressed joint working with the LSAB. We have also provided a number of training sessions on PREVENT in partnership with the Community Safety team and the LSAB.
 - h) Continued to undertake multi-agency audits. The Professional Practice sub- group now takes a themed focus and cases are debated by a range of agencies/ professionals. Learning is shared with managers and good practice is recognised through letters of appreciation to individuals who have contributed to positive outcomes. The Chair of this group is an independent consultant from Barnardo's.
 - i) Updated a range of policies, training and guidance in accordance with the requirements of *Working Together 2015* and developed more robust systems for monitoring dissemination of policies and procedures.
 - j) Challenged Children's Social Care services on the categorisation of Child Protection Plans – given a high proportion identified as Emotional Abuse and very low numbers under Sexual Abuse. Audit work has led to action planning and improvements in practice in this area, although it remains under scrutiny.
 - k) Used a 360 degree feedback system to feed back on the performance of the Independent Chair with an annual multi-agency 'Challenge and Review' Panel.
 - l) Endorsed the initiation of a significant safeguarding investigation relating to a local primary school, following an unprecedented volume of concerns voiced by parents and others.
 - m) Safeguarding Training - Delivered 83 Interagency safeguarding training courses (including 6 one hour WRAP workshops)
1441 Interagency training placers made available and 1185 filled
794 Professionals trained
- The LSCB faces a number of current and **future Challenges/Areas for Development:**

- a) In accordance with other LSCBs the resourcing and financing of the Board remains tight and pressured. All partner agencies experience similar pressures on funding, and organisational change creates the potential for additional pressures if funding is determined at a national or sub-regional level rather than recognising historic local contributions. This will require ongoing monitoring and management.
- b) Recruitment and retention of social work staff remains a challenge, although B&NES generally fares better than many authorities. A range of initiatives has been put in place by the service to mitigate this.
- c) We welcome the current Ofsted focus on the quality of LSCBs and their role in challenging partner agencies to work more closely when addressing Safeguarding issues. However, the uncertainty of timing of an inspection and the multiple and evolving inspection frameworks brings an additional pressure to the capacity of Board members alongside a full and packed agenda.
- d) Ongoing work to develop and implement a Multi-Agency Safeguarding Hub for children and adults.
- e) Working across boundaries in collaboration with other agencies responding to CSE activity and prosecutions/SCRs.



5. Engagement with Children & Young People

Both the Member of the B&NES Youth Parliament (MYP) and the Deputy (DMYP) now attend the LSCB Communications sub-group and have been developing the young people's LSCB webpages.

The Senior In Care Council (SICC) commissioned by B&NES Council and run by Off The Record is very proactive. Over the last year their achievements have included:

- Delivering a presentation to the Virtual School celebration evening.
- Delivering a workshop to the Junior in Care Council (JICC) to inspire and support them to transition up to the Senior Group.

- Delivering a workshop on what makes a good Social Worker – this led to the design of a diagram illustrating ‘What makes a good Social Worker’ which is included on B&NES Council’s recruitment page.
- Developing of a Training Resource pack to support “Young People to take part in the recruitment process”.
- Refreshing the Children and Young People’s Participation Strategy
- Refreshing the Service User Engagement Framework.
- Creating of a page about the SICC for the Looked After Children Packs which each young person receives when they go into care.
- Providing questions for interviews and scored the answers for the following Posts, Service Manager for Safeguarding Outcomes, Looked-After Children’s Nurse Role, LSCB/LSAB Business Support Manager, Child Protection Chair and Independent Reviewing Officer.
- Having some fun creating a podcast with local radio station Somer Valley FM, broadcast in Nov 2015. The podcast covered personal stories and busting some ‘myths’ about what it’s like being in care. These were funded by Bath Virtual School and Bath Spa University and will be developed for use in training for Social Workers, Teachers and other Health and Social Care Professionals.

6. Independent Chair’s Closing Summary



As the Independent Chair of the LSCB, I would point out the continued priority of the Board’s efforts in support of early help and prevention. The data indicates that the support needs of many children and families are met early enough to reduce the likelihood of child protection arrangements. Furthermore, there is strong evidence that children’s lives have improved because of this early and focused work.

I am especially delighted with the response to our recent assessment of the effectiveness of safeguarding in schools/college. Every school/college in Bath and North East Somerset responded and thus far, our analysis of the data provided indicates that they all take safeguarding very seriously and that appropriate arrangements are in place.

Public finances continue to be pressured across every agency associated with the LSCB. I am mindful of the substantial pressure to reduce contributions both financial and in terms of people, to the LSCB by member agencies. I wish to record my appreciation of those agencies that have resisted the temptation to withdraw resources. It is essential, now more than ever that the LSCB continues to monitor and coordinate safeguarding and protection for the most vulnerable in our communities.